

At the intersection is
Your or Our Climate
Action!

From concept developed by Ayana Elizabeth Johnson, co-founder of Urban Ocean Lab and The All We Can Save Project climate initiative.

What brings you fulfilment?
Sources of satisfaction/enlivenment

What are you good at?
Your knowledge, skills, resources & networks

What work needs doing?
Climate & justice solutions

Winchester Action on Climate Change Ltd. (WinACC)

Jo Crocker WinACC

Creation Matters

Newsletter of the Southampton Eco District

[See Jo's talk via the District website](#)

At the last of the first series of “Creation Mondays” webinars, available on the [Southampton District website](#), Jo Crocker, Executive Director of Winchester Action on the Climate Crisis (WinACC), directed our thoughts upon our actions. Jo has found the Venn diagram above to be a helpful planning guide. In discussion we can find out a likely positive move can come from us finding the overlap of our skills, fulfilment and the need. She gave some great examples of actions by churches and community groups in Winchester Green Week.

[See Katherine's talk via the JRI website](#)

In a talk to mark the 25th anniversary of the founding of the John Ray Initiative by Sir John Houghton, the lead editor of the first three IPCC reports, Katharine Hayhoe expressed Jo’s approach in terms of our ‘head, heart and hands’, expressed in 2 Timothy 1:7 as:

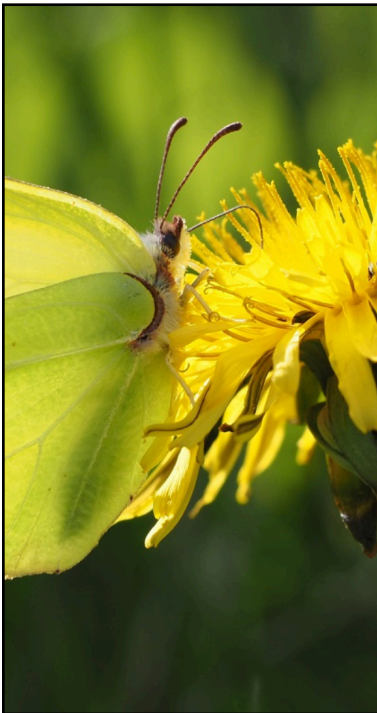
For God has not given us the spirit of fear; but of power, and of love, and of a sound mind.

Active Hope

Creation Matters!

Creation Matters!

[Creation Matters! email](#)



Here is an excellent initiative to promote biodiversity on the Isle of Wight.

Creation Matters! is a network of individuals, from churches across the Isle of Wight, that seeks to encourage and inspire creation care on and around the Island. We seek to bring hope and practical good news to the places where we live through innovative community engagement.

Creation Matters! was formed in 2022 and has attracted Christians from churches across the Isle of Wight. The aim is to encourage and inspire creation care through developing an understanding of the Christian response to climate change and improving biodiversity. Anybody can join the network on the understanding that it is distinctly a Christian initiative.

We gather, discuss and disseminate practical information and advice and bring prayerful hope to this beautiful Island through community engagement within and beyond the Christian church.

We have been supported and inspired in our development by Christian organisations such as A Rocha UK, Tearfund and Hope for the Future.



Thanks to Alison Geddes and Keith Marston of Newport Methodist Church. Photos with kind permission from Keith Marston

Celebrating Biodiversity on the Isle of Wight

Our plans include:

- *Presenting our thoughts to the parliamentary candidates this year in the hope that creation care is a high priority for the next Government.*
- *Celebrating relevant initiatives across the Island.*
- *Supporting churches to work towards an Eco Church award.*
- *Empowering Christians to raise creation care issues in all aspects of their worship and church life.*
- *Developing a Creation Matters! website for awareness raising, support, and the sharing of information and resources.*

Target 25



T3. Freshwater habitat



T10. Bees



T22. Common swift

Target 25 is A Rocha UK's project to help a range of declining species (10), taxonomic groups (10) and threatened habitats (5), with an example of each class shown in the margin. Jo's Venn diagram approach might help you identify which of the 25 Targets your church or group might monitor, record and take supportive action to nurture. You can use an on-line tool like iRecord to monitor the species or markers that you are tracking, and register the area you are covering so that you can share your findings with others. By working together a mosaic of studies can build up an overall picture.

As an example, clicking on the appropriate box, here for 'T10 Bees', opens up advice, guidance and information sources to help you choose your Target and start out.

GROUPS

Examples from left to right: Bumble bee spp. (*Bombus* spp) Regina Ebner, Gwynne's mining bee (*Andrena bicolor*) Peter Sturgess, Honey bee (*Apis mellifera*) Norman Crowson, Red mason bee (*Osmia bicornis*) Peter Sturgess

Bees (incl. bumblebees)

A Rocha UK is part of the Wildlife and Countryside Link coalition advocating the adoption of the Nature 2030 reforms by political parties vying for our support at the upcoming election. We as individuals and groups are being offered these ways for us to make some difference to created life.



We propose the following urgent actions to get nature-recovery back on track:

- | | | | | |
|--|---|--|---|--|
| <p>1. A major increase in public spending for nature, doubling the nature-friendly farming budget to pay for an increase in ambitious agroecological action and large-scale nature restoration.</p> | <p>2. A Nature Recovery Obligation, legislating for mandatory climate and nature transition plans, and setting new duties to require private sector funding for species and habitats recovery.</p> | <p>3. A 30x30 rapid delivery programme, restoring protected sites and landscapes, and creating a Public Nature Estate to fulfill the promise to protect 30% of the land and sea for nature.</p> | <p>4. A National Nature Service, delivering wide scale habitat restoration and creating green jobs in urban, rural and coastal habitats and in species recovery.</p> | <p>5. A Right to a Healthy Environment, establishing a human right to clean air and water and access to nature.</p> |
|--|---|--|---|--|

What's going on?

What can we do for you?

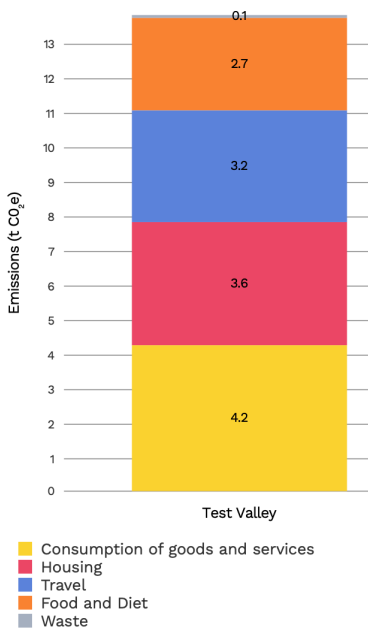
Creation Mondays webinars

Our Creation Monday webinars have given us a great resource and a model to adapt for the future. But what else would be useful for you?

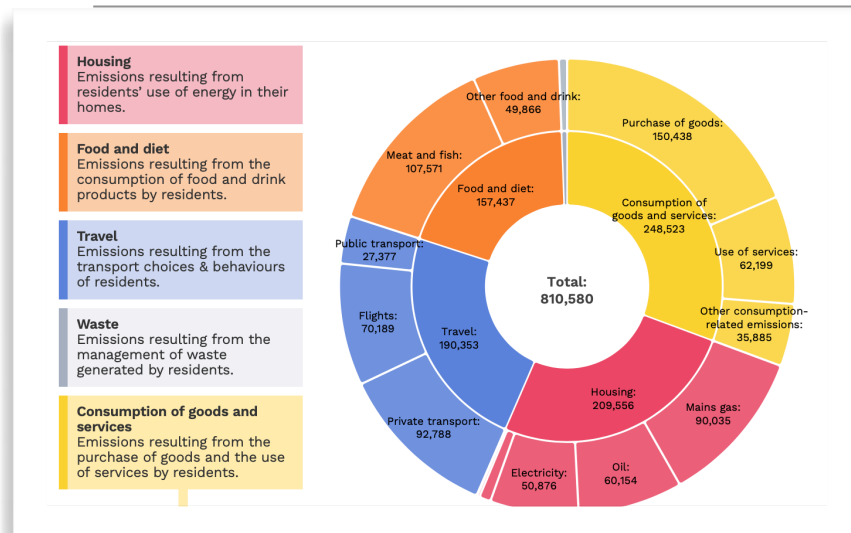
- A webinar on fund raising or biodiversity?
- Resources for a Climate Sunday service?
- Material for a Creationtide discussion group?

Please let us know by sending comments to the ecodistrict email below.

Impact surveys



How are things going?



Carbon footprint reports

Jo Crocker helped us with ways to prioritise our actions. One informative tool is *Impact*, a community carbon calculator from the Centre for Sustainable Energy. You can frame your search around your local authority area, an electoral ward or a post code. For our own local authority, Test Valley Borough Council, consumption of goods and services was the largest sector. The annual carbon footprint per household was estimated to be 13.8t CO₂e, rather higher than the national average of 13.0t CO₂e, with housing and travel contributing most to the higher consumption figures. Why not see how your church's catchment fares? You can find that the full report for your area includes targets for changes to allow your locality to tread more lightly on God's earth.

John Evans, Eco District champion

Creation Matters is the newsletter of the **Southampton Eco District group**:

To order your own copy and to provide news items contact

ecodistrict@sdmc.org.uk